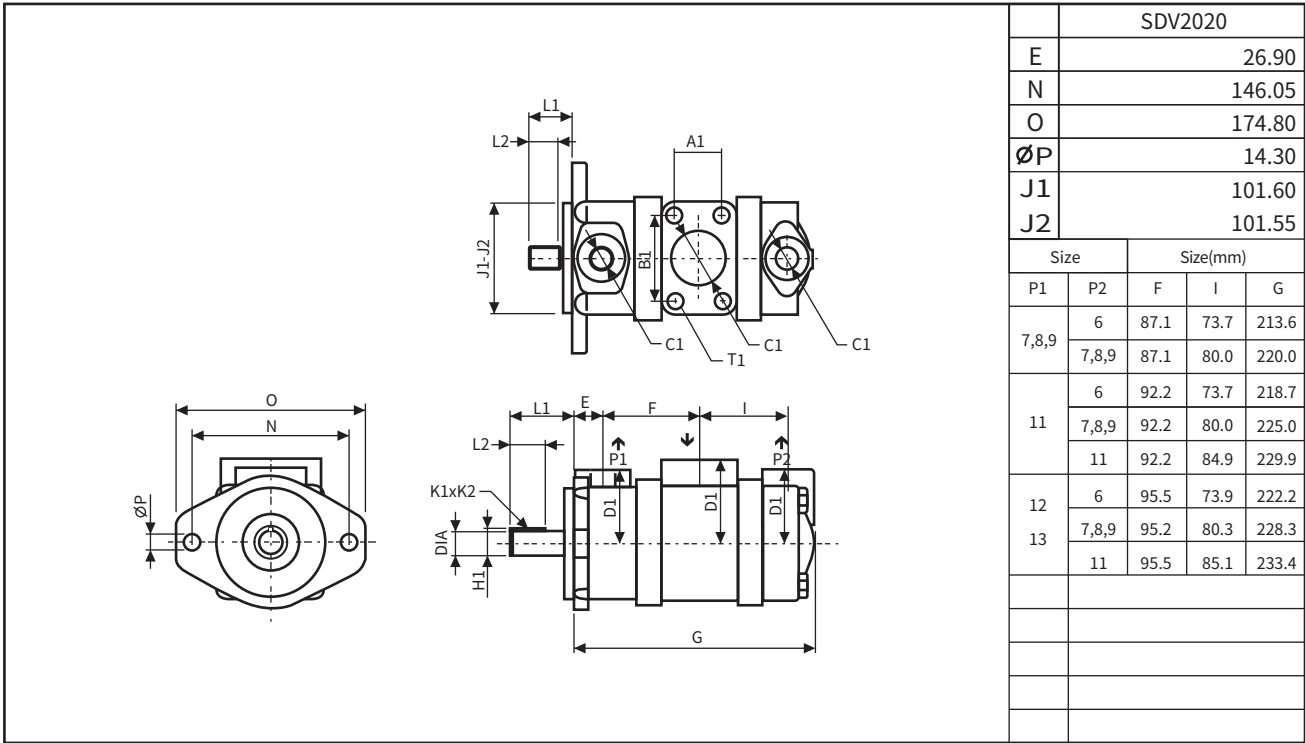
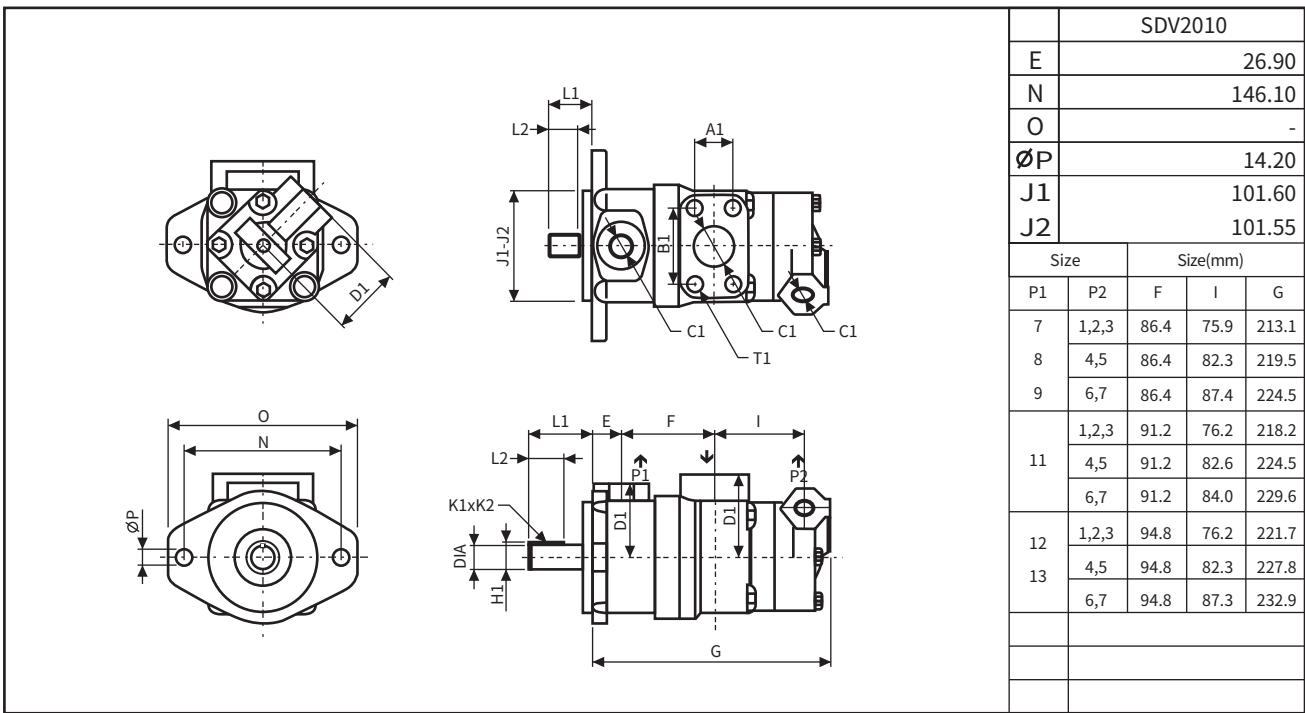


SDV Series Vane Pumps

Maximum pressure 190 bar



Oil port	S(12UNF-2B)				B(BSPP)				Oil prot			
	P1 port		P2 port		P1 port		P2 port					
	ØC1	D1	ØC1	D1	ØC1	D1	ØC1	D1	A1	B1	ØC1	D1
SDV2010	1” ¹ / ₁₆	66.50	¾”	60.50	¾”	66.50	½”	60.50	35.71	69.85	38.1	76.20
SDV2020			1” ¹ / ₁₆	69.80			¾”	69.80	42.80	77.80	50.8	74.70

T6/T7 Series Vane Pumps

Maximum pressure 320 bar

Cartridge		Displacement Vi ml/rev	Mineral oil based anti-wear hydraulic oil (HF-0,HF-2)											Code	
			Speed range	Max outlet pressure		Speed(rpm)									
				Interval	Continuous	1200	1500	1800	2100	2200	2300	2500	2800		
Size	Series														Min. inlet barA (Absolute pressure)
		rpm	bar	bar											
B	B02	5.8	600-3600	320	290	0.80	0.80	0.80	0.80	0.80	0.80	0.80	0.80	B02	
	B03	9.8												B03	
	B04	12.8												B04	
	B05	15.9												B05	
	B06	19.8												B06	
	B07	22.5												B07	
	B08	24.9												B08	
	B10	31.8												B10	
	B12	41.0	600-3000	300	275							B12			
	B15	50.0		280	240							0.84	1.00	B15	
C	003	10.8	600-2800	280	240	0.80	0.80	0.80	0.80	0.80	0.90	1.00	003		
	005	17.2											005		
	006	21.3											006		
	008	26.4											008		
	010	34.1								0.85	0.92	1.03	010		
	012	37.1											012		
	014	46.0								0.85	0.90	0.95	014		
	017	58.3											017		
	020	63.8								0.85	0.90	0.95	020		
	022	70.3											022		
	025	79.3	600-2500	210	160	0.80	0.80	0.80	0.90	0.95	1.05	025			
	028	88.8							0.98	1.00	1.08	-	028		
	031	100.0							0.85	0.90	1.00	1.11	-	031	
D	014	47.6	600-2500	240	210	0.80	0.80	0.80	0.80	0.80	0.95	1.00	-	014	
	017	58.2												017	
	020	66.0												020	
	024	79.5							0.82	0.92	1.00	1.18		024	
	028	89.7												028	
	031	98.3							0.90	0.95	1.00	1.23		031	
	035	111.0												035	
	038	120.3						0.92	0.98	1.02	1.29	038			
	042	136.0										042			
	045	145.7	600-2200	210	160	0.85	0.98	1.05	-	-	045				
	050	158.0									1.02	1.09	-	-	050
	E	042	132.3	600-2200	240	210	0.80	0.80	0.80	0.90	1.00	-	-	-	042
045		142.4	045												
050		158.5	050												
052		164.8	052												
057		179.8	0.85				0.95	1.09	057						
062		196.7							062						
066		213.3	0.85				0.85	0.95	1.00	1.05	066				
072		227.1									072				
085		269.0	600-1800	120	80	1.00	1.00	1.00	-	-	085				

1. If the speed is lower than 600rpm, please consult us.

T6/T7Series Vane PumpsMaximum pressure 320 bar

T6/T7Series Vane PumpsMaximum pressure 320 bar

Cartridge		Displac- ement Vi ml/rev	Flame retardant hydraulic fluid (water glycol (HF-4), phosphate ester (HF-5))						Code
			Speed rang	Max outlet pressure		Min outlet pressure			
Size	Series			Int.	Cont.	1200rpm	1500rpm	1800rpm	
			rpm	bar	bar	barA (Absolute pressure)			
B	B02	5.8	600-1800	240	210	1.00	1.00	1.00	B02
	B03	9.8							B03
	B04	12.8							B04
	B05	15.9							B05
	B06	19.8							B06
	B07	22.5							B07
	B08	24.9							B08
	B10	31.8							B10
	B12	41.0							B12
	B15	50.0							B15
C	003	10.8	600-1800	210	175	1.00	1.00	1.00	003
	005	17.2							005
	006	21.3							006
	008	26.4							008
	010	34.1							010
	012	37.1							012
	014	46.0							014
	017	58.3							017
	020	63.8							020
	022	70.3							022
	025	79.3							025
	028	88.8			160				028
	031	100.0							031
D	014	47.6	600-1800	210	175	1.00	1.00	1.00	014
	017	58.2							017
	020	66.0							020
	024	79.5							024
	028	89.7							028
	031	98.3							031
	035	111.0							035
	038	120.3							038
	042	136.0							042
	045	145.7						1.10	045
	050	158.0			050				
	E	042			132.3			600-1800	210
045		142.4	045						
050		158.5	050						
052		164.8	052						
057		179.8	057						
062		196.7	1.10		062				
066		213.3	1.10	1.10	1.20	066			
072		227.1				072			
085		269.0				120	80		

Input speed: 1000rpm (mineral oil-based anti-wear hydraulic oil HF-0 / HF-2, viscosity: 24cSt)																	
Cartridge		Displacement Vi ml/rev	outlet flow (l/min)							Input power (kW)							Code
Size	Series		0 bar	70 bar	140 bar	210 bar	240 bar	280 bar	320 bar	7 bar	70 bar	140 bar	210 bar	240 bar	280 bar	320 bar	
B	B02	5.8	5.8	4.9	4.2	3.3				0.2	0.9	1.7	2.5				B02
	B03	9.8	9.8	8.9	8.2	7.3	6.8	6.3	5.8	0.2	1.3	2.6	3.9	4.5	5.2	6.0	B03
	B04	12.8	12.8	11.9	11.2	10.3	9.8	9.3	8.8	0.2	1.7	3.3	5.0	5.7	6.6	7.6	B04
	B05	15.9	15.9	15.0	14.3	13.4	12.9	12.4	11.9	0.3	2.1	4.1	6.0	6.9	8.1	9.2	B05
	B06	19.8	19.8	18.9	18.2	17.3	16.8	16.3	15.8	0.3	2.5	5.0	7.4	8.5	9.9	11.3	B06
	B07	22.5	22.5	21.6	20.9	20.0	19.5	19.0	18.5	0.4	2.8	5.6	8.3	9.6	11.2	12.8	B07
	B08	24.9	24.9	24.0	23.3	22.4	21.9	21.4	20.9	0.4	3.1	6.2	9.2	10.5	12.3	14.0	B08
	B10	31.8	31.8	30.9	30.2	29.3	28.8	28.3	27.8	0.5	3.9	7.8	11.6	13.3	15.5	17.7	B10
	B12	41.0	41.0	40.1	39.4	38.5	38.0	37.5		0.6	5.0	9.9	14.8	17.0	19.8		B12
	B15	50.0	50.0	49.1	48.4	47.5	47.0	46.5		0.7	6.0	12.0	18.0	20.6	24.0		B15
C	003	10.8	10.8	8.3	5.8					0.9	2.2	3.7					003
	005	17.2	17.2	14.7	12.2	9.7	9.2			1.0	3.0	5.2	7.4	8.4			005
	006	21.3	21.3	18.8	16.3	13.8	13.3	12.2		1.0	3.4	6.1	8.9	10.0	11.5		006
	008	26.4	26.4	23.9	21.4	18.9	18.4	17.3		1.1	4.0	7.3	10.6	12.0	13.9		008
	010	34.1	34.1	31.6	29.1	26.6	26.1	25.0		1.2	4.9	9.1	13.3	15.1	17.5		010
	012	37.1	37.1	34.6	32.1	29.6	29.1	28.0		1.2	5.3	9.8	14.4	16.3	18.9		012
	014	46.0	46.0	43.5	41.0	38.5	38.0	36.9		1.3	6.3	11.9	17.5	19.9	23.1		014
	017	58.3	58.3	55.8	53.3	50.8	50.3	49.2		1.5	7.8	14.8	21.8	24.8	28.8		017
	020	63.8	63.8	61.3	58.8	56.3	55.8	54.7		1.5	8.4	16.0	23.7	27.0	31.4		020
	022	70.3	70.3	67.8	65.3	62.8	62.3	61.2		1.6	9.2	17.6	26.0	29.6	34.4		022
	025	79.3	79.3	76.8	74.3	71.8	71.3	70.2		1.7	10.2	19.7	29.2	33.2	38.6		025
	028	88.8	88.8	86.3	83.8	81.3				1.8	11.3	21.9	32.5				028
031	100.0	100.0	97.5	95.0	92.5				2.0	12.6	24.5	36.4				031	
D	014	47.6	47.6	43.6	38.6	34.6	32.6			1.6	6.8	12.5	18.3	20.7			014
	017	58.2	58.2	54.2	49.2	45.2	43.2			1.7	8.0	15.0	22.0	25.0			017
	020	66.0	66.0	62.0	57.0	53.0	51.0			1.8	8.9	16.8	24.7	28.1			020
	024	79.5	79.5	75.5	70.5	66.5	64.5			1.9	10.5	20.0	29.4	33.5			024
	028	89.7	89.7	85.7	80.7	76.7	74.7			2.0	11.7	22.3	33.0	37.5			028
	031	98.3	98.3	94.3	89.3	85.3	83.3			2.1	12.7	24.3	36.0	41.0			031
	035	111.0	111.0	107.0	102.0	98.0	96.0			2.3	14.2	27.3	40.5	46.1			035
	038	120.3	120.3	116.3	111.3	107.3	105.3			2.4	15.2	29.5	43.7	49.8			038
	042	136.0	136.0	132.0	127.0	123.0	121.0			2.6	17.1	33.1	49.2	56.1			042
	045	145.7	145.7	141.7	136.7	132.7	130.7			2.7	18.2	35.4	52.6	59.9			045
	050	158.0	158.0	154.0	149.0	145.0				2.8	19.6	38.3	56.9				050
E	042	132.3	132.3	127.3	122.3	117.3	115.3			3.3	17.4	33.0	48.5	55.2			042
	045	142.4	142.4	137.4	132.4	127.4	125.4			3.5	18.6	35.3	52.1	59.3			045
	050	158.5	158.5	153.5	148.5	143.5	141.5			3.6	20.4	39.1	57.7	65.7			050
	052	164.8	164.8	159.8	154.8	149.8	147.8			3.7	21.2	40.6	59.9	68.2			052
	057	179.8	179.8	174.8	169.8	164.8	162.8			3.9	22.9	44.1	65.2	74.2			057
	062	196.7	196.7	191.7	186.7	181.7	179.7			4.1	24.9	48.0	71.1	81.0			062
	066	213.3	213.3	208.3	203.3	198.3	196.3			4.3	26.8	51.9	76.9	87.6			066
	072	227.1	227.1	222.1	217.1	212.1	210.1			4.4	28.4	55.1	81.7	93.1			072
	085	269.0	269.0	264.0						4.9	33.3						085

T6/T7Series Vane Pumps

Maximum pressure 320 bar

Input speed: 1200rpm (mineral oil-based anti-wear hydraulic oil HF-0 / HF-2, viscosity: 24cSt)																	
Cartridge		Displac- ement Vi ml/rev	Outlet flow (l/min)							Input power (kW)							Code
Size	Series		0 bar	70 bar	140 bar	210 bar	240 bar	280 bar	320 bar	7 bar	70 bar	140 bar	210 bar	240 bar	280 bar	320 bar	
B	B02	5.8	7.0	6.1	5.4	4.5	4.0			0.4	1.3	2.2	3.2	3.6			B02
	B03	9.8	11.8	10.9	10.2	9.3	8.8	8.3	7.8	0.4	1.8	3.3	4.9	5.5	6.4	7.3	B03
	B04	12.8	15.4	14.5	13.8	12.9	12.4	11.9	11.4	0.5	2.2	4.2	6.1	6.9	8.1	9.2	B04
	B05	15.9	19.1	18.2	17.5	16.6	16.1	15.6	15.1	0.5	2.7	5.0	7.4	8.4	9.8	11.2	B05
	B06	19.8	23.8	22.9	22.2	21.3	20.8	20.3	19.8	0.6	3.2	6.1	9.1	10.3	12.0	13.7	B06
	B07	22.5	27.0	26.1	25.4	24.5	24.0	23.5	23.0	0.6	3.6	6.9	10.2	11.6	13.5	15.4	B07
	B08	24.9	29.9	29.0	28.3	27.4	26.9	26.4	25.9	0.6	3.9	7.6	11.2	12.8	14.8	16.9	B08
	B10	31.8	38.2	37.3	36.6	35.7	35.2	34.7	34.2	0.7	4.9	9.5	14.1	16.1	18.7	21.4	B10
	B12	41.0	49.2	48.3	47.6	46.7	46.2	45.7		0.9	6.2	12.1	18.0	20.5	23.9		B12
	B15	50.0	60.0	59.1	58.4	57.5	57.0	56.5		1.0	7.4	14.6	21.7	24.8	28.9		B15
C	003	10.8	13.0	10.5	8.0					1.1	2.6	4.4					003
	005	17.2	20.6	18.1	15.6	13.1	12.6	11.5		1.1	3.5	6.2	8.8	10.0	11.5		005
	006	21.3	25.6	23.1	20.6	18.1	17.6	16.5		1.2	4.1	7.3	10.5	11.9	13.8		006
	008	26.4	31.7	29.2	26.7	24.2	23.7	22.6		1.3	4.8	8.7	12.7	14.4	16.6		008
	010	34.1	40.9	38.4	35.9	33.4	32.9	31.8		1.4	5.9	10.9	15.9	18.1	20.9		010
	012	37.1	44.5	42.0	39.5	37.0	36.5	35.4		1.4	6.3	11.7	17.2	19.5	22.6		012
	014	46.0	55.2	52.7	50.2	47.7	47.2	46.1		1.5	7.6	14.2	20.9	23.8	27.6		014
	017	58.3	70.0	67.5	65.0	62.5	62.0	60.9		1.7	9.3	17.7	26.1	29.7	34.5		017
	020	63.8	76.6	74.1	71.6	69.1	68.6	67.5		1.8	10.0	19.2	28.4	32.3	37.6		020
	022	70.3	84.4	81.9	79.4	76.9	76.4	75.3		1.9	11.0	21.0	31.1	35.5	41.2		022
	025	79.3	95.2	92.7	90.2	87.7	87.2	86.1		2.0	12.2	23.6	34.9	39.8	46.3		025
	028	88.8	106.6	104.1	101.6	99.1				2.1	13.5	26.2	38.9				028
	031	100.0	120.0	117.5	115.0	112.5				2.3	15.1	29.4	43.6				031
D	014	47.6	57.1	53.1	48.1	44.1	42.1			1.8	8.0	14.9	21.8	24.8			014
	017	58.2	69.8	65.8	60.8	56.8	54.8			1.9	9.5	17.9	26.3	29.9			017
	020	66.0	79.2	75.2	70.2	66.2	64.2			2.1	10.6	20.1	29.6	33.6			020
	024	79.5	95.4	91.4	86.4	82.4	80.4			2.2	12.5	23.9	35.2	40.1			024
	028	89.7	107.6	103.6	98.6	94.6	92.6			2.4	13.9	26.7	39.5	45.0			028
	031	98.3	118.0	114.0	109.0	105.0	103.0			2.5	15.1	29.1	43.1	49.1			031
	035	111.0	133.2	129.2	124.2	120.2	118.2			2.7	16.9	32.7	48.5	55.2			035
	038	120.3	144.4	140.4	135.4	131.4	129.4			2.8	18.2	35.3	52.4	59.7			038
	042	136.0	163.2	159.2	154.2	150.2	148.2			3.0	20.4	39.7	59.0	67.2			042
	045	145.7	174.8	170.8	165.8	161.8	159.8			3.2	21.7	42.4	63.0	71.9			045
	050	158.0	189.6	185.6	180.6	176.6				3.3	23.5	45.8	68.2				050
E	042	132.3	158.8	153.8	148.8	143.8	141.8			4.0	20.8	39.5	58.3	66.3			042
	045	142.4	170.9	165.9	160.9	155.9	153.9			4.1	22.2	42.4	62.5	71.2			045
	050	158.5	190.2	185.2	180.2	175.2	173.2			4.3	24.5	46.9	69.3	78.9			050
	052	164.8	197.8	192.8	187.8	182.8	180.8			4.4	25.4	48.6	71.9	81.9			052
	057	179.8	215.8	210.8	205.8	200.8	198.8			4.6	27.5	52.8	78.2	89.1			057
	062	196.7	236.0	231.0	226.0	221.0	219.0			4.9	29.8	57.6	85.3	97.2			062
	066	213.3	256.0	251.0	246.0	241.0	239.0			5.1	32.2	62.2	92.3	105.2			066
	072	227.1	272.5	267.5	262.5	257.5	255.5			5.3	34.1	66.1	98.1	111.8			072
	085	269.0	322.8	317.8						5.9	40.0						085

T6/T7Series Vane Pumps

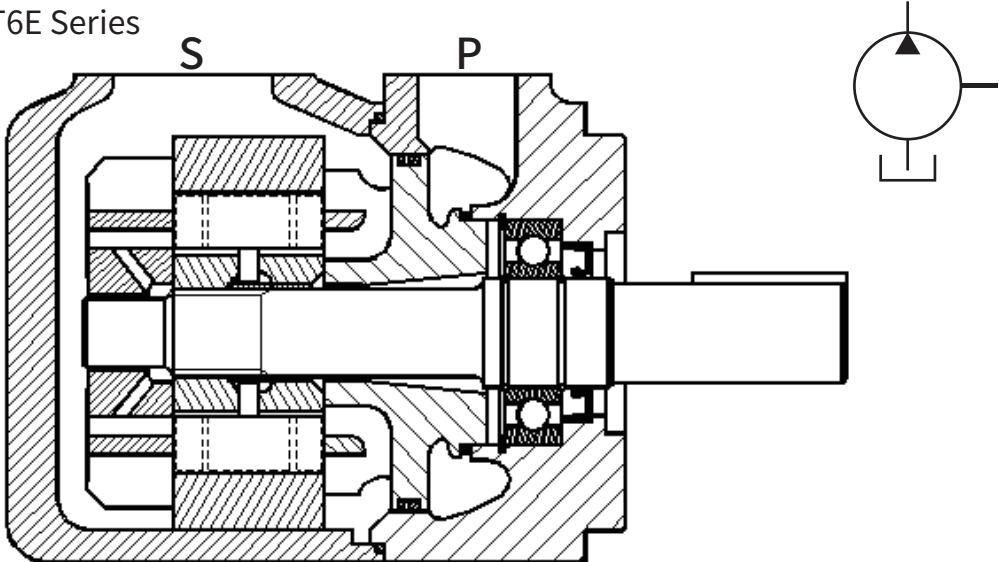
Maximum pressure 320 bar

Input speed: 1800rpm (mineral oil-based anti-wear hydraulic oil HF-0 / HF-2, viscosity: 24cSt)																	
Cartridge		Displac- ement Vi ml/rev	Outlet flow (l/min)							Input power (kW)							Code
Size	Series		0 bar	70 bar	140 bar	210 bar	240 bar	280 bar	320 bar	7 bar	70 bar	140 bar	210 bar	240 bar	280 bar	320 bar	
B	B02	5.8	10.4	9.5	8.8	7.9	7.4	6.9	6.4	0.7	2.0	3.4	5.0	5.6	6.4	7.2	B02
	B03	9.8	17.6	16.7	16.0	15.1	14.6	14.1	13.6	0.8	2.8	5.1	7.5	8.5	9.7	11.0	B03
	B04	12.8	23.0	22.1	21.4	20.5	20.0	19.5	19.0	0.9	3.4	6.4	9.4	10.6	12.3	13.9	B04
	B05	15.9	28.6	27.7	27.0	26.1	25.6	25.1	24.6	0.9	4.1	7.7	11.3	12.8	14.9	16.9	B05
	B06	19.8	35.6	34.7	34.0	33.1	32.6	32.1	31.6	1.0	4.9	9.3	13.8	15.7	18.1	20.6	B06
	B07	22.5	40.5	39.6	38.9	38.0	37.5	37.0	36.5	1.1	5.5	10.5	15.5	17.6	20.4	23.2	B07
	B08	24.9	44.8	43.9	43.2	42.3	41.8	41.3	40.8	1.1	6.0	11.5	17.0	19.3	22.4	25.5	B08
	B10	31.8	57.2	56.3	55.6	54.7	54.2	53.7	53.2	1.3	7.4	14.4	21.3	24.3	28.2	32.1	B10
	B12	41.0	73.8	72.9	72.2	71.3	70.8	70.3		1.5	9.4	18.2	27.1	30.9	35.9		B12
	B15	50.0	90.0	89.1	88.4	87.5	87.0	86.5		1.7	11.3	22.0	32.8	37.4	43.5		B15
C	003	10.8	19.4	16.9	14.4	11.9	11.4	10.3		1.7	4.0	6.4	8.9	10.0	11.5		003
	005	17.2	31.0	28.5	26.0	23.5	23.0	21.9		1.9	5.3	9.1	13.0	14.6	16.8		005
	006	21.3	38.3	35.8	33.3	30.8	30.3	29.2		1.9	6.2	10.8	15.6	17.6	20.3		006
	008	26.4	47.5	45.0	42.5	40.0	39.5	38.4		2.1	7.2	13.0	18.8	21.3	24.6		008
	010	34.1	61.4	58.9	56.4	53.9	53.4	52.3		2.2	8.9	16.2	23.6	26.8	31.0		010
	012	37.1	66.8	64.3	61.8	59.3	58.8	57.7		2.3	9.5	17.5	25.5	29.0	33.6		012
	014	46.0	82.8	80.3	77.8	75.3	74.8	73.7		2.5	11.4	21.2	31.1	35.4	41.0		014
	017	58.3	104.9	102.4	99.9	97.4	96.9	95.8		2.7	13.9	26.4	38.9	44.2	51.4		017
	020	63.8	114.8	112.3	109.8	107.3	106.8	105.7		2.8	15.1	28.7	42.3	48.2	56.0		020
	022	70.3	126.5	124.0	121.5	119.0	118.5	117.4		3.0	16.5	31.4	46.4	52.9	61.5		022
	025	79.3	142.7	140.2	137.7	135.2	134.7	133.6		3.2	18.4	35.2	52.1	59.3	69.0		025
	028	88.8	159.8	157.3	154.8	152.3				3.4	20.3	39.2	58.1				028
031	100.0	180.0	177.5	175.0	172.5				3.6	22.7	43.9	65.1				031	
D	014	47.6	85.7	81.7	76.7	72.7	70.7			2.9	12.1	22.3	32.5	36.9			014
	017	58.2	104.8	100.8	95.8	91.8	89.8			3.1	14.4	26.8	39.2	44.5			017
	020	66.0	118.8	114.8	109.8	105.8	103.8			3.3	16.0	30.1	44.1	50.1			020
	024	79.5	143.1	139.1	134.1	130.1	128.1			3.6	18.8	35.7	52.6	59.9			024
	028	89.7	161.5	157.5	152.5	148.5	146.5			3.8	21.0	40.0	59.0	67.2			028
	031	98.3	176.9	172.9	167.9	163.9	161.9			4.0	22.8	43.6	64.5	73.4			031
	035	111.0	199.8	195.8	190.8	186.8	184.8			4.2	25.4	49.0	72.5	82.5			035
	038	120.3	216.5	212.5	207.5	203.5	201.5			4.4	27.4	52.9	78.3	89.2			038
	042	136.0	224.8	240.8	235.8	231.8	229.8			4.8	30.7	59.5	88.2	100.5			042
	045	145.7	262.3	258.3	253.3	249.3	247.3			5.0	32.7	63.5	94.3	107.5			045
	050	158.0	284.4	280.4	275.4	271.4				5.2	35.3	68.7	102.1				050
E	042	132.3	238.1	233.1	228.1	223.1	221.1			6.4	31.5	59.4	87.3	99.4			042
	045	142.4	256.3	251.3	246.3	241.3	239.3			6.6	33.6	63.7	93.7	106.6			045
	050	158.5	285.3	280.3	275.3	270.3	268.3			6.9	37.0	70.4	103.9	118.2			050
	052	164.8	296.6	291.6	286.6	281.6	279.6			7.1	38.3	73.1	107.8	122.8			052
	057	179.8	323.6	318.6	313.6	308.6	306.6			7.4	41.5	79.4	117.3	133.6			057
	062	196.7	354.1	349.1	344.1	339.1	337.1			7.7	45.0	86.5	127.9	145.7			062
	066	213.3	383.9	378.9	373.9	368.9	366.9			8.1	48.5	93.4	138.4	157.7			066
	072	227.1	408.8	403.8	398.8	393.8	391.8			8.4	51.4	99.2	147.1	167.6			072
	085	269.0	484.2	479.2						9.2	60.2						085

T6/T7 Series Vane Pumps

Maximum pressure 320 bar

Single Vane Pump
T7B, T6C, T6D, T6E Series



Ordering Codee.g. : T7BS-B10-1R00-A1M1 - T6C-025-1R00-C1

1. **T7BS**-B10-1R00-A1M1.....Model

SAE installation	T7BS	T6C	T6D	T6E
Metric installation	T7B	-	-	-

2. T7B-B10-1R00-A1M1..... Cartridge

B	C	D	E
B02..... 5.8	003..... 10.8	014..... 47.6	042..... 132.3
B03..... 9.8	005..... 17.2	017..... 58.2	045..... 142.4
B04..... 12.8	006..... 21.3	020..... 66.0	050..... 158.5
B05..... 15.9	008..... 26.4	024..... 79.5	052..... 164.8
B06..... 19.8	010..... 34.1	028..... 89.7	057..... 179.8
B07..... 22.5	012..... 37.1	031..... 98.3	062..... 196.7
B08..... 24.9	014..... 46.0	035..... 111.0	066..... 213.3
B10..... 31.8	017..... 58.3	038..... 120.3	072..... 227.1
B12..... 41.0	020..... 63.8	042..... 136.0	085..... 269.0
B15..... 50.0	022..... 70.3	045..... 145.7	
	025..... 79.3	050..... 158.0	
	028..... 88.8		
	031..... 100.0		

3. T7B-B10-1R00-A1M1.....Shaft type

Port position	00	01	02	03

4. T7B-B10-1R00-A1M1.....Rotation(shaft end view)

Clockwise	R
Counter-clockwise	L

5. T7B-B10-1R00-A1M1..... Port position

6. T7B-B10-1R00-A1M1.....Design letter

7. T7B-B10-1R00-A1M1Seal class

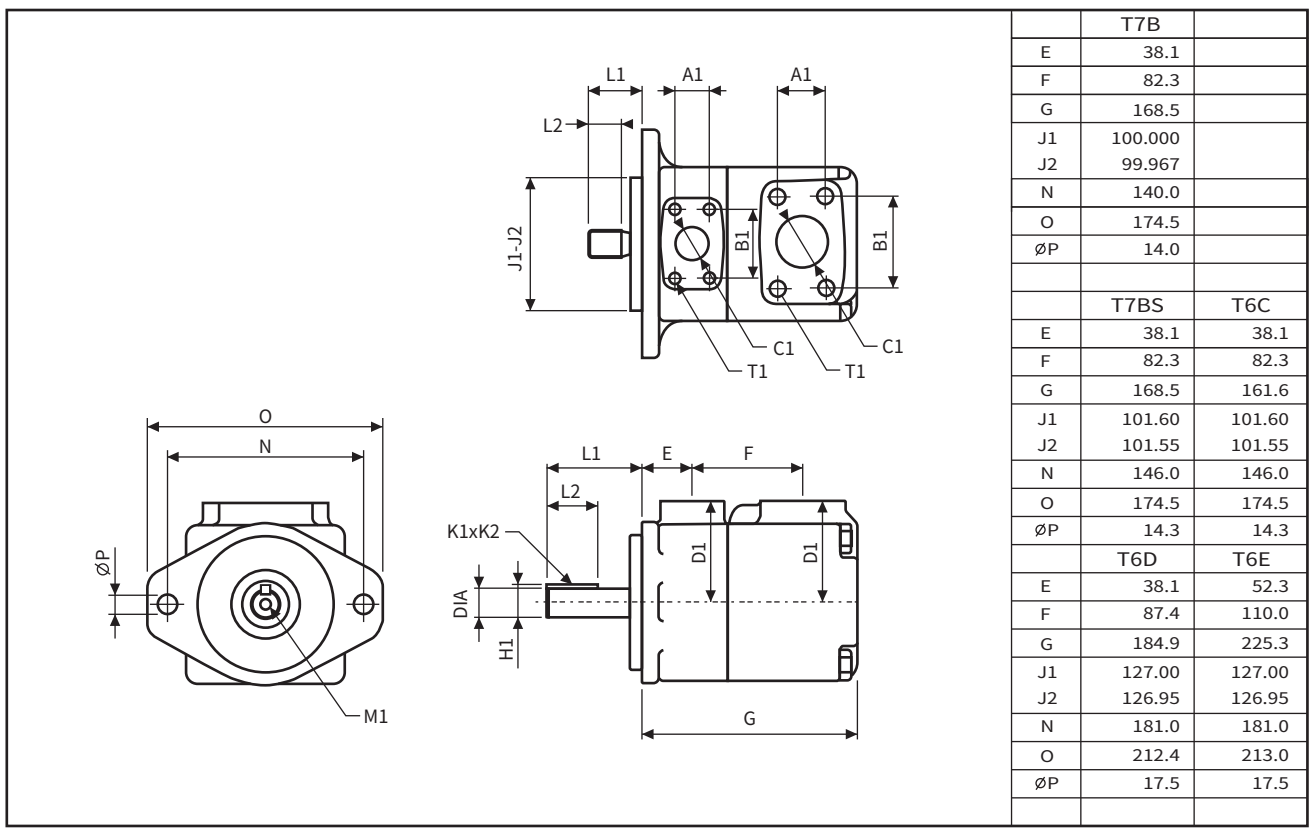
Nitrile rubber: mineral oil	1
Fluoro rubber: mineral oil and fire resistant fluids	5

8. T7B-B10-1R00-A1M1.....Mounting connection

Thread		Metric thread		UNC thread
T7B	S=1½"	P=¾"	M1	-
		P=1"	M0	-
T7BS	S=1½"	P=¾"	M1	01
		P=1"	M0	00
T6C	S=½"	P=1"	No options	No options
T6D	S=2"	P=1¼"	No options	No options
T6E	S=3"	P=1½"	No options	No options

T6/T7 Series Vane Pumps

Maximum pressure 320 bar



Shaft type		Maximum torque (N.m)					Installation size (mm)					
		T7B	T7BS	T6C	T6D	T6E	L1	L2	Diameter	K1xK2	H1	M1
1	Keyed: SAE B(Φ22)		●	275			71.4	38.1	22.225-22.200	6.35x6.30	24.95	M8 x 16
	Keyed: SAE C(Φ31)				●		83.6	49.3	31.750-31.700	7.94x7.89	35.27	M10 x 20
	Keyed: SAE CC(Φ38)					●	90.9	50.8	38.100-38.050	9.52x9.47	42.36	M10 x 20
2	Keyed: non SAE(Φ22)			238			58.2	31.7	22.225-22.200	4.76x4.71	24.53	-
	Keyed: ISO R775(Φ25)	●					70.0	40.0	24.9935-25.0065	8.00x7.00	28.22	-
	Keyed: non SAE(Φ31)				577		73.2	38.1	31.750-31.700	7.94x7.89	35.27	-
	Keyed: non SAE(Φ31)					577	61.9	38.1	31.750-31.700	7.94x7.89	35.27	-
3	Spline: SAE B		●	343			40.7	24.5	SAE J498b grade 1, pitch 16/32, 13 teeth			-
	Spline: SAE C				●	●	55.2	38.0	SAE J498b grade 1, pitch 12/24, 14 teeth			-
4	Spline: SAE BB		●	●			45.5	24.5	SAE J498b grade 1, pitch 16/32, 15 teeth			-
	Spline: non SAE				●		77.7	48.0	SAE J498b grade 1, pitch 12/24, 14 teeth			-
	Spline: SAE CC					●	62.2	31.5	SAE J498b grade 1, pitch 12/24, 17 teeth			-

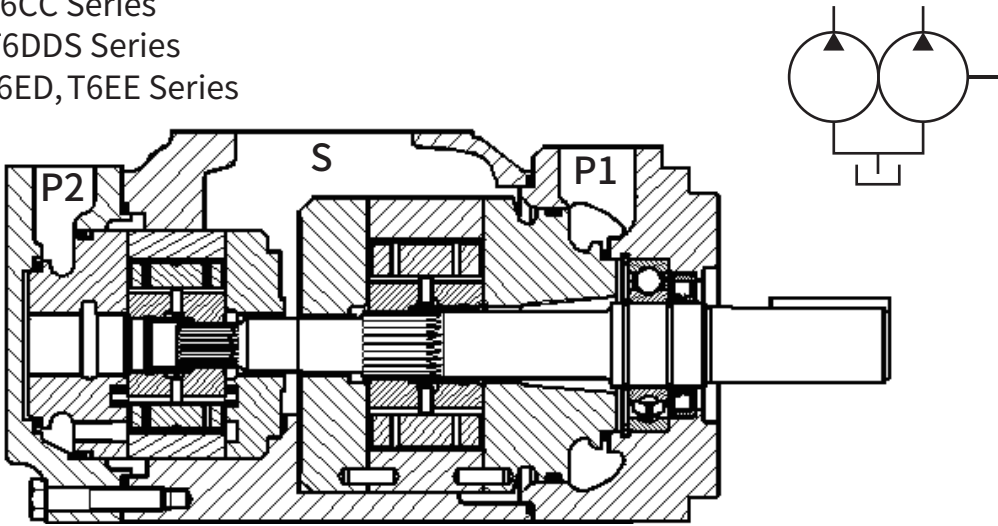
Oil port			Installation size (mm)				
			A1	B1	ØC1	D1	T1 Thread
T7BS	P	01: ¾" 00: 1"	22.2 26.2	47.7 52.4	19.0 25.4	76.2	3/8"-16UNC x 19.0
	S	1 ½"	35.8	70.0	38.1	76.2	1/2"-13UNC x 22.4
T7B	P	M1: ¾" M0: 1"	22.2 26.2	47.7 52.4	19.0 25.4	76.2	M10x19.0
	S	1 ½"	35.8	70.0	38.1	76.2	M12x22.4
T6C	P	1"	26.2	52.4	25.4	76.2	3/8"-16UNCx19.0
	S	1 ½"	35.8	70.0	38.1	76.2	1/2"-13UNCx22.4
T6D	P	1 ¼"	30.2	58.7	31.8	82.6	7/16"-14UNC x 22.3
	S	2"	42.9	77.8	50.8	82.6	1/2"-13UNC x 23.9
T6E	P	1 ½"	35.7	69.8	37.1	98.6	1/2"-13UNC x 23.4
	S	3"	61.9	106.4	75.0	98.6	5/8"-11UNC x 24.0

T6/T7 Series Vane Pumps

Maximum pressure 320 bar

Double Vane Pump

T7BB, T67CB, T6CC Series
T67DB, T6DC, T6DDS Series
T67EB, T6EC, T6ED, T6EE Series



Ordering Code e.g.: T6CC-025-020-1R00-C100 - T6DC-045-014-2R00-C1

1. T6CC-025-020-1R00-C100Model

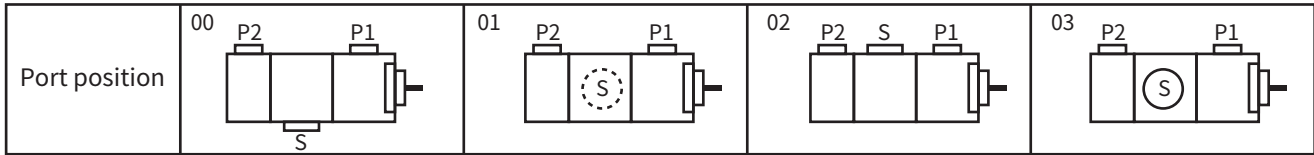
SAE Installation	T7BBS	T67CB T67CBW ¹	T6CC T6CCW ¹	
	T67DB T67DBW ²	T6DC T6DCW ²	T6DDS	
	T67EB	T6EC	T6ED	T6EES ³
Metric Installation	T7BB	T6EE ³		

T67CBW, T6 counter-clockwise: 2 heavy duty shafts
T67DBW, T6D clockwise: 5 heavy duty shafts
T6EE/T6EES: See "Double tail drive vane pump" section.

2. T6CC-025-020-1R00-C100 Cartridge

B	C	D	E
B02..... 5.8	003..... 10.8	014..... 47.6	042..... 132.3
B03..... 9.8	005..... 17.2	017..... 58.2	045..... 142.4
B04..... 12.8	006..... 21.3	020..... 66.0	050..... 158.5
B05..... 15.9	008..... 26.4	024..... 79.5	052..... 164.8
B06..... 19.8	010..... 34.1	028..... 89.7	057..... 179.8
B07..... 22.5	012..... 37.1	031..... 98.3	062..... 196.7
B08..... 24.9	014..... 46.0	035..... 111.0	066..... 213.3
B10..... 31.8	017..... 58.3	038..... 120.3	072..... 227.1
B12..... 41.0	020..... 63.8	042..... 136.0	085..... 269.0
B15..... 50.0	022..... 70.3	045..... 145.7	
	025..... 79.3	050..... 158.0	
	028..... 88.8		
	031..... 100.0		

3. T6CC-025-020-1R00-C100Shaft type



4. T6CC-025-020-1R00-C100Rotation

Clockwise	R
Counter-clockwise	L

5. T6CC-025-020-1R00-C100Port position

6. T6CC-025-020-1R00-C100Design letter

7. T6CC-025-020-1R00-C100Seal class

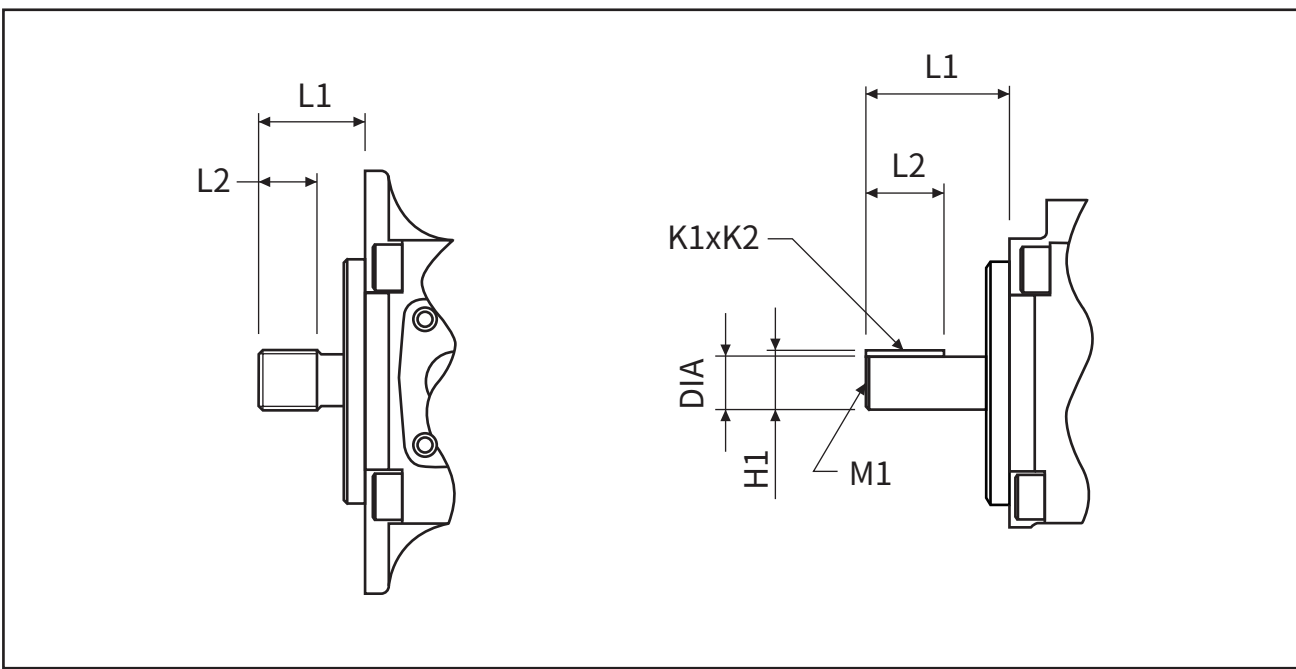
Nitrile rubber: mineral oil	1
Fluoro rubber: mineral oil and fire resistant fluids	5

8. T6CC-025-020-1R00-C100Mounting connection

Model	Oil port flange thread			Oil port thread	
	S	P1	P2	Metric thread	UNC thread
T7BB	2 1/2"	1" - 3/4"	3/4"	M0 - M1	-
T7BBS	2 1/2"	1" - 3/4"	3/4"	M0 - M1	00 - 01
T67CB	2 1/2"	1"	1" - 3/4"	M0 - M1	00 - 01
T6CC	3"	1"	1" - 3/4"	0M - W0	00 - 01
	2 1/2"	1"	1" - 3/4"	1M - W1	10 - 11
T6DC	3"	1 1/4"	1"	No options	No options
T6DDS	4"	1 1/4"	1 1/4"	M0	00
T67EB	3 1/2"	1 1/2"	1" - 3/4"	M0 - M1	00 - 01
T6EC	3 1/2"	1 1/2"	1"	No options	No options
T6ED	4"	1 1/2"	1 1/4"	No options	No options

T6/T7 Series Vane Pumps

Maximum pressure 320 bar

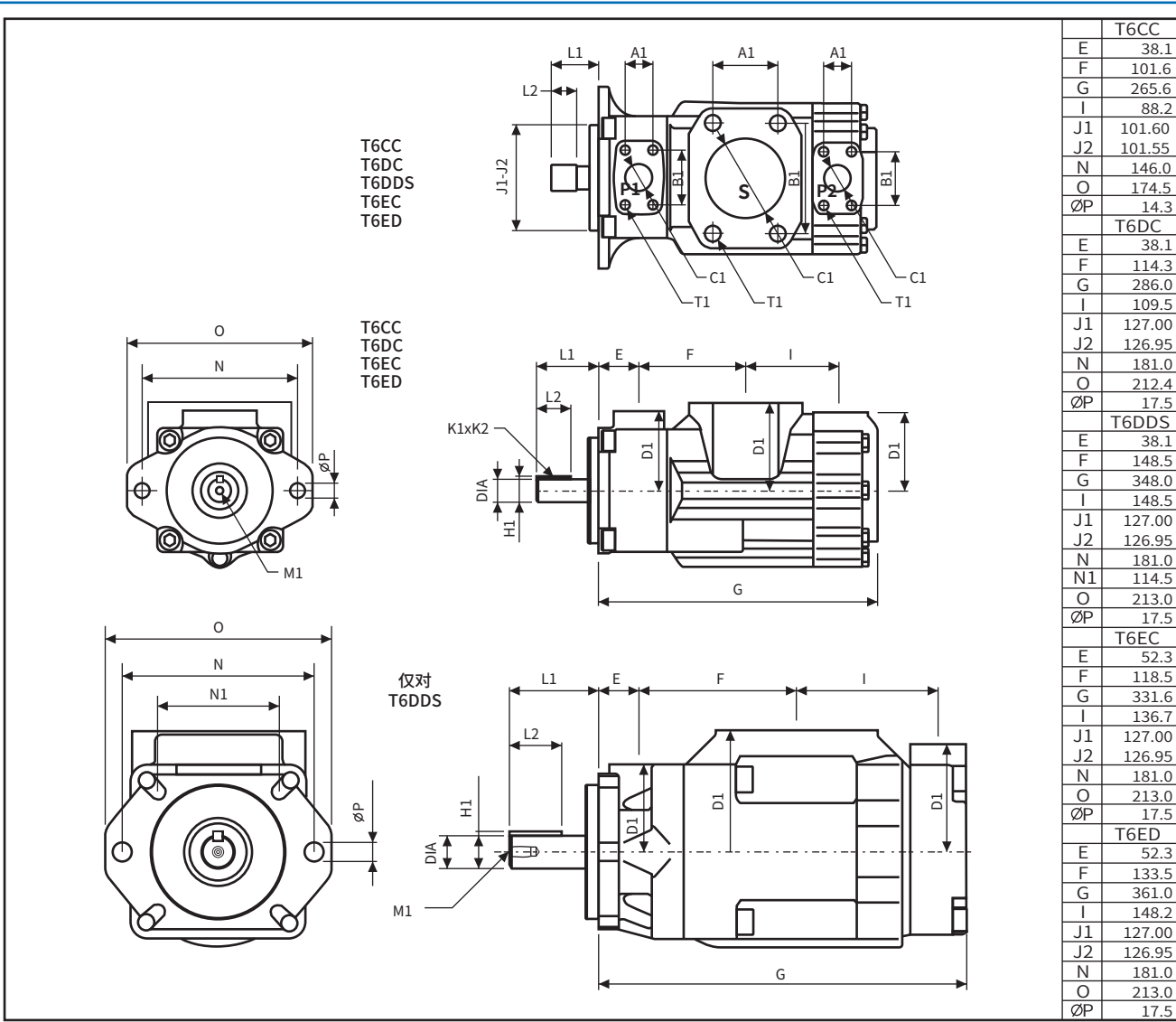


Shaft type		Maximum torque (Nm)					Installation size (mm)					
		T7BB	T7BBS	T67CB T6CC	T67DB T6DC	T6DDS T67EB T6EC T6ED	L1	L2	Diameter	K1xK2	H1	M1
1	Keyed: non SAE(Φ22)		238	238			58.2	31.7	22.225-22.200	4.76 x 4.71	24.53	
	Keyed: SAE C(Φ31)				721	686	83.6	49.3	31.750-31.700	7.94 x 7.89	35.27	M10 x 20.0
	Keyed: SAE CC(Φ38)					●	90.9	50.8	38.100-38.050	9.52 x 9.47	42.36	M10 x 20.0
2	Keyed: SAE BB(Φ25)		357	357			71.4	38.1	25.400-25.370	6.35 x 6.30	28.22	M8 x 16.0
	Keyed: non SAE(Φ31)				577		73.2	38.1	31.750-31.700	7.94 x 7.89	35.27	
	Keyed: SAE-CC					●	91.0	50.8	38.100-38.050	9.52 x 9.47	42.36	M10 x 20.0
	Keyed: non SAE(Φ31)					577	61.9	38.1	31.750-31.700	7.94 x 7.89	35.27	
3	Spline: SAE B		●				40.7	24.5	SAE J498b grade 1, pitch 16/32, 13 teeth			
	Spline: SAE BB			545			45.5	24.5	SAE J498b grade 1, pitch 16/32, 15 teeth			
	Spline: SAE C				●	971	55.7	38.0	SAE J498b grade 1, pitch 12/24, 14 teeth			
4	Spline: SAE BB		●				45.6	24.5	SAE J498b grade 1, pitch 16/32, 15 teeth			
	Spline: non SAE				●		77.7	48.0	SAE J498b grade 1, pitch 12/24, 14 teeth			
	Spline: SAE BB					570	46.0	31.5	SAE J498b grade 1, pitch 16/32, 15 teeth			
	Spline: SAE CC					●	62.2	31.5	SAE J498b grade 1, pitch 12/24, 17 teeth			
5	Spline: SAE B			343			40.7	24.5	SAE J498b grade 1, pitch 16/32, 13 teeth			
	Keyed: non SAE(Φ34)				●	883	83.4	60.0	34.900-34.875	7.94 x 7.89	38.42	M8 x 16.0
	Keyed: ISO(Φ25)	●					70.0	40.0	25.006-24.993	8.00 x 7.96	28.22	
R	Keyed: (Φ25)			302 ¹			48.7	31.8	25.400-25.370	6.35 x 6.30	28.22	M8 x 16.0
V	Keyed: (Φ32)			545 ¹			89.0	50.0	32.000-31.960	10.0 x 9.98	35.40	M12 x 24.0
X	Keyed: (Φ27)			423 ¹			64.1	49.2	26.950-26.920	6.35 x 6.30	29.85	M8 x 16.0
W	Keyed: (Φ31)			545 ¹			55.5	38.1	31.750-31.700	7.94 x 7.89	35.27	M8 x 16.0

¹ T67CBW, T6CCW
² T67DBW, T6DCW

T6/T7 Series Vane Pumps

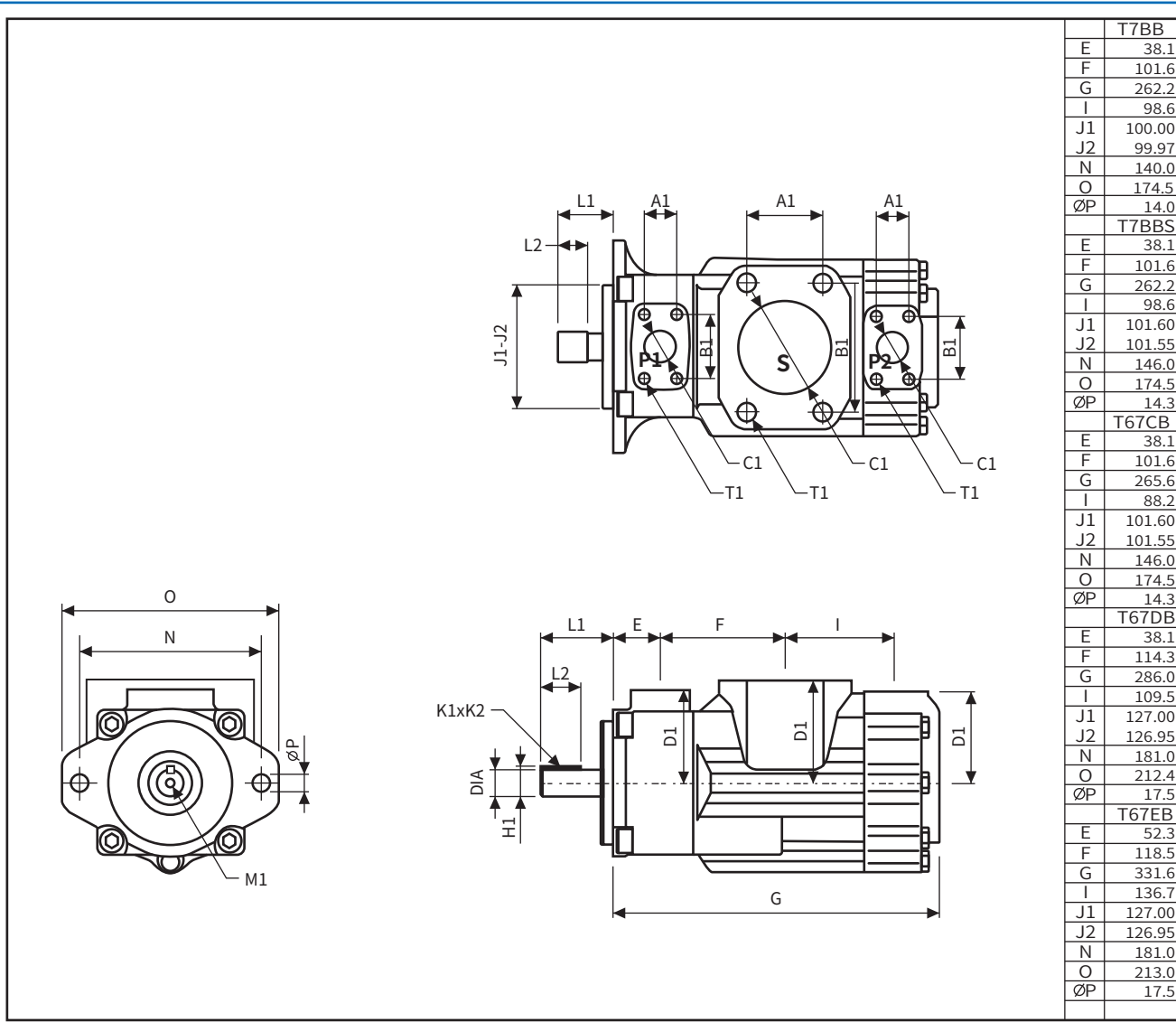
Maximum pressure 320 bar



Oil port			Size(mm)					
			A1	B1	ØC1	D1	T1 Thread	
							Metric	UNC
T6CC	P1	1"	26.2	52.4	25.4	76.2		3/8"-16UNC x 19.0
	P2	01-11: 3/4"	22.2	47.7	19.0	76.2		3/8"-16UNC x 19.0
		00-10: 1"	26.2	52.4	25.4	74.7		3/8"-16UNC x 19.0
	S	10-11: 2 1/2"	50.8	88.9	63.5	84.1		1/2"-13UNC x 23.9
T6DC		00-01: 3"	61.9	106.4	76.2			5/8"-11UNC x 28.4
	P1	1 1/4"	30.2	58.7	31.8	82.6		7/16"-14UNC x 22.3
	P2	1"	26.2	52.4	25.0	74.7		3/8"-16UNC x 19.0
	S	3"	62.0	106.4	76.0	88.9		5/8"-11UNC x 28.4
T6DDS	P1	1 1/4"	30.2	58.7	31.8	82.6	M12 x 22.3	7/16"-14UNC x 22.3
	P2	1 1/4"	30.2	58.7	31.8	101.6	M12 x 24.0	7/16"-14UNC x 24.0
								5/8"-11UNC x 30.0
	S	4"	77.8	130.2	101.6	115.0	M16 x 30.0	5/8"-11UNC x 30.0
T6EC	P1	1 1/2"	35.7	69.8	37.1	98.4		1/2"-13UNC x 23.4
	P2	1"	26.2	52.4	25.0	74.7		3/8"-16UNC x 19.0
								5/8"-11UNC x 29.5
	S	3 1/2"	69.9	120.6	88.9	102.4		1/2"-13UNC x 23.4
T6ED	P1	1 1/2"	35.7	69.8	37.1	98.4		7/16"-14UNC x 24.0
	P2	1 1/4"	30.2	58.7	29.5	101.6		5/8"-11UNC x 30.0
	S	4"	77.8	130.2	101.6	102.4		

T6/T7 Series Vane Pumps

Maximum pressure 320 bar



Oil port			尺寸 (mm)					
			A1	B1	ØC1	D1	T1 prot thread	
							Metric	UNC
T7BB T7BBS	P1	1: 3/4"	22.2	47.6	19.0	74.7		3/8"-16UNC x 19.0
	P2	0: 1"	26.2	52.4	25.4	74.7	M10 x 19.0	3/8"-16UNC x 19.0
	S	2 1/2"	50.8	88.9	63.5	84.1	M12 x 22.4	1/2"-13UNC x 23.9
T67CB	P1	1"	26.2	52.4	25.4	76.2	M10 x 19.0	3/8"-16UNC x 19.0
	P2	3/4"	22.2	47.7	19.0	76.2	M10 x 19.0	3/8"-16UNC x 19.0
	S	2 1/2"	50.8	88.9	63.5	84.1	M12 x 30.0	1/2"-13UNC x 23.9
T67DB	P1	1 1/4"	30.2	58.7	31.8	82.6	M12 x 22.3	7/16"-14UNC x 22.3
	P2	3/4"	22.2	47.7	19.0	74.7	M10 x 19.0	3/8"-16UNC x 19.0
	S	3"	62.0	106.4	76.0	88.9	M16 x 28.4	5/8"-11UNC x 28.4
T67EB	P1	1 1/2"	35.7	69.8	37.1	98.4	M12 x 23.5	1/2"-13UNC x 23.4
	P2	3/4"	22.2	47.7	19.0	74.7	M10 x 19.0	3/8"-16UNC x 19.0
	S	3 1/2"	69.9	120.6	88.9	102.4	M16 x 29.5	5/8"-11UNC x 29.5